

ITEM 5A - UPDATE ON THE SUPPORTED LIVING AND AGEING WELL STRATEGY

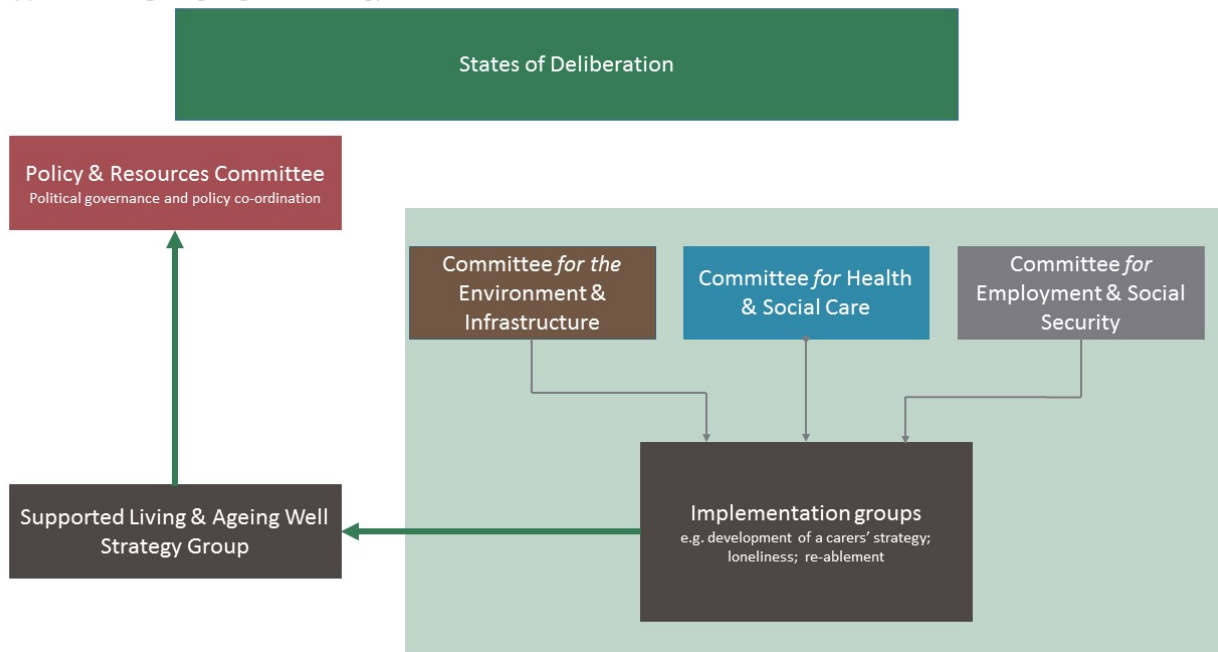
In February 2016, (Billet d’Etat III) the States approved the Supported Living and Ageing Well strategy (SLAWs), to consider how Guernsey should transform the health and social care provision in the future and address the issues around an ageing demographic, increasingly complex care needs and fiscal constraints, when public expenditure on long term care and support are rising. Within the resolutions the States agreed that in the short term the Policy Council, would be responsible for progressing the strategy. Such responsibility has now passed to the Committee for Health & Social Care, albeit a number of Committees will need to work closely together to ensure delivery of this strategy and the Policy & Resources Committee will need to ensure that activity is suitably co-ordinated.

In order to discharge its role of maintaining oversight and co-ordination, the Policy and Resources Committee has put in place a governance structure to oversee the delivery of the SLAWs programme. A SLAWs Supervisory Group has been put together, comprising representatives from the Committees for Health and Social Care, Employment and Social Security, and the Environment and Infrastructure, together with involvement from appropriate third sector groups. The Supervisory Group will be accountable to the Policy and Resources Committee and will oversee the work of the implementation groups and carry out a scrutiny and challenge role for the programme.

Governance structure

The proposed governance structure is outlined below;

Supported Living & Ageing Well Strategy



Membership

The SLAWs has been developed concurrently with the Children and Young People's Plan (CYPP), which focuses on transforming health and social care services for children and young people. Therefore, the oversight group structures will have a similar structure with representation from the lead Committees involved in delivering the two strategies.

Political

A representative from:

The Policy & Resources Committee; Chair - Social Policy Champion - Deputy Jane Stephens

The Committee *for* Health & Social Care;

The Committee *for* Employment & Social Security; and

The Committee *for* Environment & Infrastructure

Third sector

A representative from:

Guernsey Community Foundation (GCF);

Ageing Well in the Bailiwick

Officers

Chief Strategy & Policy Officer

Chief Secretary - The Committee *for* Health & Social Care;

Chief Secretary - The Committee *for* Employment & Social Security; and

Chief Secretary Environment & Infrastructure

Mandate

The Supervisory Group will be responsible for:

- Leadership, co-ordination and monitoring of the SLAWS programme's commitments and outcomes;
- Reporting on progress and performance to the Policy & Resources Committee;
- Holding partners to account for delivering outcomes and meeting targets;
- Maximising opportunities for cross-agency working and sharing knowledge;
- Ensuring that the programme is reviewed regularly;
- Ensuring that the voices of older people can be heard and their views taken into account.

Meeting frequency

To be determined by the group once it is formed, but expected to be quarterly.

Administrative support

To be provided by officers based at the Office of the Policy & Resources Committee.

Author: Helga Carre, Policy Officer

Responsible Officer: Colette Falla, Director of Strategy and Policy

Date: 6th September 2016